



Quick Update Guide for ComplianceOne Client

ComplianceOne® Solution

2016.5
November 2016

This publication was written for ComplianceOne.

Publication Information / Version

ComplianceOne Solution, Release 2016.5
Quick Update Guide for ComplianceOne Client
Document Version 16.0, November 2016

Distributed Subject to Terms of a License or other Agreement

The contents of this publication, including its appendices, exhibits, and other attachments, as updated or revised, are highly confidential and proprietary to Wolters Kluwer Financial Services, Inc. or its subsidiaries or affiliates (“Wolters Kluwer Financial Services”). This publication is distributed pursuant to a Non-Disclosure Agreement, Evaluation Agreement, License Agreement and/or other similar agreement(s) with Wolters Kluwer Financial Services, Inc. or its subsidiary or affiliate. Unless otherwise specifically provided in such agreement(s), the reproduction of this publication is strictly prohibited. Use and distribution of this publication are also subject to the responsibilities and obligations of such agreement(s), which require confidential treatment of this publication and its contents.

Information in this guide is subject to change without notice and does not represent a commitment on the part of Wolters Kluwer Financial Services.

Do Not Reproduce or Transmit

Unless otherwise specifically authorized in the agreement or license under which this publication has been provided, no part of this publication may be posted, played, transmitted, copied or reproduced in any form or by any means, electronic or mechanical, including photocopying, recording, or retaining on any information storage and retrieval system, without prior written permission from Wolters Kluwer Financial Services.

Requests for permission to reproduce content should be directed to Wolters Kluwer Financial Services, Inc., Corporate Legal Department, by telephone at 1-800-397-2341.

Not a Substitute for Legal Advice

This publication is intended to provide accurate and authoritative information about the subject matter covered based upon information available at the time of publication. Examples given in this publication are for illustrative purposes only.

Development of this publication and the software (including forms, disclosures, reports, and other documents generated by the software) or other products that it describes was based on Wolters Kluwer Financial Services' understanding of various laws, regulations and commentaries. Wolters Kluwer Financial Services cannot and does not guarantee that its understanding is correct.

This publication is not intended, and should not be used, as a substitute for legal, accounting, or other professional advice. Wolters Kluwer Financial Services is not engaged in providing legal, accounting or other professional services. If legal or other professional assistance is required, you should seek the services of a competent professional. We encourage you to seek the advice of your own attorney concerning all legal issues involving the use of this publication and any products described in this publication. If your interpretations or your counsel's interpretations are contrary to those expressed in this publication, you should of course, follow your/your counsel's interpretations.

The following notice is required by law:

WOLTERS KLUWER FINANCIAL SERVICES' PRODUCTS AND SERVICES ARE NOT A SUBSTITUTE FOR THE ADVICE OF AN ATTORNEY.

Warranty Disclaimer

Except only for the warranties (if any) expressly set forth in the agreement(s) under which this publication is provided (i.e., your agreement or license for the described product), this publication is provided “as is”, and Wolters Kluwer Financial Services makes no warranty, express, implied, by description, by sample or otherwise, and in particular and without limitation, makes no implied warranties of merchantability or fitness for purpose. No modifications to this Warranty Disclaimer are authorized unless in writing and signed by the President or a Vice President of the Wolters Kluwer Financial Services entity licensing the product described in this publication.

Attributions and Acknowledgements

Expere and Bankers Systems are the registered trademarks of Wolters Kluwer Financial Services, Inc. All other trademarks are the property of their respective owners.

Copyright Information

©2016 Wolters Kluwer Financial Services, St. Cloud, Minnesota

This publication is the confidential information of Wolters Kluwer Financial Services. Distribution of this publication is subject to restrictions in the license or agreement under which this publication is provided to authorized Wolters Kluwer Financial Institution customers.

All rights reserved.

Table of Contents

| | |
|---|---|
| Before You Begin | 1 |
| Client Update Installation | 1 |
| Client Update on Terminal Server | 4 |
| Windows 2008 R2 Terminal Server Client DEP Exception Required | 4 |
| Post Installation | 5 |
| Log Files | 5 |
| Additional Documentation | 5 |
| How to Contact Us | 6 |
| Support Web Site | 6 |
| Downloading | 6 |
| E-Mail | 6 |
| Phone | 6 |
| Fax | 6 |

Before You Begin

- If you plan to install this update using a process that differs from these instructions, please [contact SupportLine](#) to discuss your options.
- If you are installing a client on a machine with no pre-existing client installation, please see the **New Client or Terminal Server Installation** section of **Installation Instructions for Updates**, which is a detailed installation guide.
- Review the ComplianceOne® system and software requirements.

Available on the SupportLine web site: <http://www.wolterskluwerts.com/support/>

- Ensure prerequisite software is installed prior to the client installation.
 - Prerequisite software includes SOAP 3.0, Microsoft .NET Framework 2.0, .NET Framework 3.5, and .NET Framework 4. Only if not installed in your earlier update to 2014.4, install the .NET 4.0 patch from <http://support.microsoft.com/kb/2580188/en-us>.
 - View installed applications in Control Panel > Add or Remove Programs. If needed, the applications are included on the ComplianceOne CD in the Applications\Utilities folder.
 - Add proxy server/firewall exceptions, if needed. (Refer to Appendix F in the Update Installation Instructions.)
- Verify the version of ComplianceOne that is currently on the client.
 - This installation program only supports the update of ComplianceOne Release 2016.4 to Release 2016.5
 - To check the current installed version, launch administration and note the version number in the lower right corner of the logon window.
- Carefully review the current Release Notes issued with this release, so that you and other users can be prepared for changes.

The following step **MUST** be performed before installing ComplianceOne on a client:

- Ensure that the name and IP address of the ComplianceOne application server (if used) and each work station have been added as Trusted Sites in Internet Explorer. For detailed information please see the complete **Installation Instructions for Updates**.

Client Update Installation

Use this section for updating the client software on the client computer or via the Terminal Services application server:

This installation cannot be done remotely but must be completed machine-side.

On the client machine, logon to the network as an Administrator.

Temporarily disable the client PC's virus scanning software.

Install from CD:

- Place your ComplianceOne CD into the CD-ROM drive of the computer.
- Open Windows Explorer and navigate to the root folder of the CD.
- *Other Windows systems:* Double-click **setup.exe**.

OR

Install from network drive:

- Open Windows Explorer and navigate to the Client_Install folder located in the ComplianceOne share on your ComplianceOne server.
- *Other Windows systems:* Double-click **ComplianceOneClientSetup.exe**.

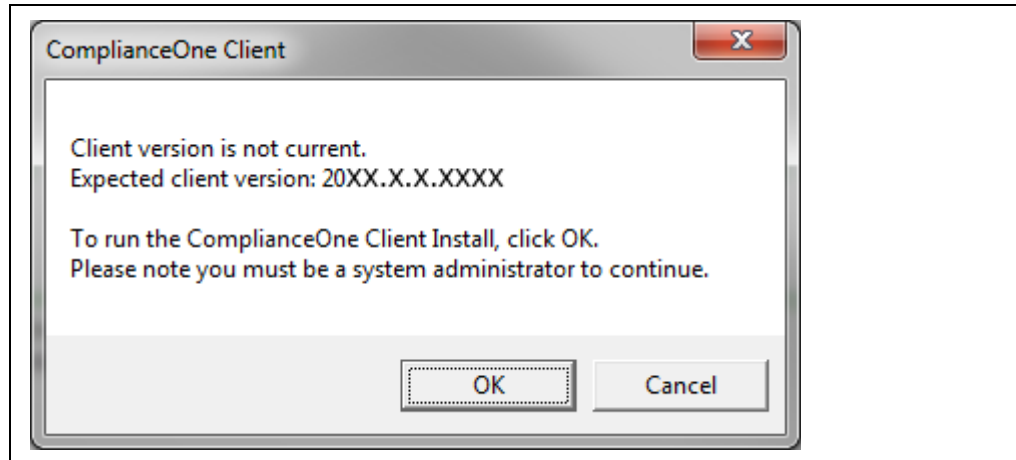
OR

Run Automated Install:

- *Note:* Your server needs to be up to date with the latest version for this to work.
- *If you are a local administrator on the machine, you will be prompted with this option when trying to open ComplianceOne Lending, Mortgage, or Deposit.* Click **OK** to continue, or **Cancel** to exit out of this option.

Automatic Update

ComplianceOne includes automatic update functionality for users on client workstations. The program allows the system to automatically update client workstations when the client is out of date. For users with Admin rights, the system will update automatically when a newer version is detected. Users without Admin rights will receive the message but will not be allowed to move forward with the automatic update.



- On the **Welcome** window click **Install ComplianceOne Solution**.
- Agree to the Documentation Agreement that you have read the release documents and click **Next**.
- On the **Custom Setup** window:
 - Select client features. Features from the previous release are selected by default.

- Ensure you only install features for which you have purchased a license.**
 - You must have purchased a license for the Mortgage feature in order to use it.**
 - Installing an unlicensed feature places an icon on the desktop that gives an error message when clicked.**
 - On the “Install to:” section, verify the path is correct.
 - Click **Next**.
- On the **Server Destination Folder** window, verify the server path. Click **Next**.
 - If any difficulties are encountered, you may see a server error listed in the error table.
- On the **Ready to Install** window, click **Install**.
- On the **Installation Completed** window, click **Finish** twice: once to end the client installation and again to complete the All-in-One Component installation.
- In the reboot notification prompt, click **Yes** to restart your machine.
 - If you click **No**, the installation will end but do not use ComplianceOne without a reboot.

Client Update on Terminal Server

Use these instructions if you currently have only the client on the Terminal Services server. Use the **Update Installation Instructions for Servers and Standalone Systems** if your configuration has separate application and database servers.

If you are using ComplianceOne with Windows 2008 R2 Terminal Server, a few additional steps are required for client configuration to prevent a known issue from occurring. These steps are detailed in the next section, [Windows 2008 R2 Terminal Server Client DEP Exception Required](#).

- Ensure that all users exit Terminal Services prior to applying this update.
- Place the Terminal Server into Install Mode, using one of the following methods:
 - Open the **Add/Remove Programs** applet in Control Panel, select **Install** and select the installation method (either CD or network).
 - Open the command prompt:
 - *In older systems:* Select **Start > Run...** Type **CMD** and click **OK**.
 - At the command prompt, type: **Change User /Install**. Press **Enter** and close.
 - Run Automated Install:
 - *Note:* Your server needs to be up to date with the latest version for this to work.
 - If you are a local administrator on the machine, you will be prompted with this option when trying to open ComplianceOne Lending, Mortgage, or Deposit. Click **OK** to continue, or **Cancel** to exit out of this option.
- Proceed with the [Client Update Installation](#).
- When the installation is complete, restart the server. After the restart Terminal Server will be in Execute mode.

Windows 2008 R2 Terminal Server Client DEP Exception Required

If you are using ComplianceOne on Windows 2008 R2 Terminal Server, unexpected terminations can occur if an exception in Data Execution Prevention, DEP, is not made. Each terminal server will require these steps to add an exception in DEP for ComplianceOne Lending, Deposit, and Mortgage.

- Right-click **Computer** from **Start** and select **Properties**.
- Click the **Advanced system settings** link on the left side.
- From the **Advanced** tab click the **Settings** button in the **Performance** section.

- Select the Data Execution Prevention tab.
- Choose the option to **Turn on DEP for all programs and services except those I select**.
- Click **Add** and browse to **Loans.exe** to add it to the list. The default path is `\\servername\ComplianceOne\Loans.exe`.
- Click **Add** and browse to **Deposits.exe** to add it to the list. The default path is `\\servername\ComplianceOne\Deposits.exe`.
- Click **Add** and browse to **Mortgage.exe** (if your financial institution has purchased this ComplianceOne functionality) to add it to the list. The default path is `\\servername\ComplianceOne\Mortgage.exe`.
- Click **OK** and close the Computer Properties window.

This is a one-time operation, that is, you do not need to add a DEP exception everytime you upgrade ComplianceOne on your Windows 2008 R2 Terminal Server. You may need to reboot the terminal server for the DEP exceptions to take effect.

Post Installation

Log Files

- An install log file will be created for each component that initiated an installation.
- The install logs will be placed in a root documents folder, the exact location of which depends on your operating system: e.g., `C:\Users\Public\` or `C:\Documents and Settings\All Users`.
- The logs record both the successful and unsuccessful operations during the product update installation.
- Logs are particularly helpful when you encounter an error.
- Logs can be opened and read in a text editor such as Notepad.

Additional Documentation

See the comprehensive guide, **Installation Instructions for Updates**, for detailed help with component installation, error messages, and troubleshooting.

How to Contact Us

Support Web Site

Visit our Software Support Web site for documentation downloads, training, or support information at the following location: <http://www.wolterskluwerfs.com/support/>

We believe you will find this to be a valuable and convenient source of support information as well as links to beneficial industry sites.

Downloading

To access the documentation as noted above and in the installation, go to our Software Support Web site, <http://www.wolterskluwerfs.com/support/>. Select Log In from the upper right corner. Enter your User Name and Password. If you are new to this site, register for a User Name and Password. Once you are logged in, follow the links for ComplianceOne documentation.

E-Mail

Questions related to the installation process may be sent to technicalsupport@wolterskluwer.com.

Phone

You can telephone our SupportLine technicians at 1-800-274-2711, ext. 1123660. Our support staff is available Monday through Friday, 7 A.M. to 7 P.M. CST. Voice mail operates continually, allowing you to leave us a message after hours and on weekends. To help us handle your question as quickly as possible, have these items available before you call:

- product name and version number
- customer number
- operating system and version number; service pack numbers, if installed

Fax

You may fax us at (320) 323-4848.

About Wolters Kluwer Financial Services - Whether complying with regulatory requirements or managing financial transactions, addressing a single key risk, or working toward a holistic enterprise risk management strategy, Wolters Kluwer Financial Services works with more than 15,000 customers worldwide to help them successfully navigate regulatory complexity, optimize risk and financial performance, and manage data to support critical decisions. Wolters Kluwer Financial Services provides risk management, compliance, finance and audit solutions that help financial organizations improve efficiency and effectiveness across their enterprise. With more than 30 offices in 20 countries, the company's prominent brands include: AppOne®, ARC Logics®, AuthenticWeb™, Bankers Systems®, Capital Changes, CASH Suite™, FRSGlobal, FinArch, GainsKeeper®, NILS®, TeamMate®, Uniform Forms™, VMP® Mortgage Solutions and Wiz®. Wolters Kluwer Financial Services is part of Wolters Kluwer, a leading global information services and solutions provider with annual revenues of (2013) €3.6 billion (\$4.7 billion) and approximately 19,000 employees worldwide. Please visit our website for more information.

Wolters Kluwer Financial Services
6815 Saukview Drive
St. Cloud, MN 56303
Toll-free: 800.274.2711

To learn more visit **WoltersKluwerFS.com**.

© 2013 Wolters Kluwer Financial Services, Inc. All Rights Reserved.